



CMFOP

WIRING SYSTEMS EXPERTS
since 1979



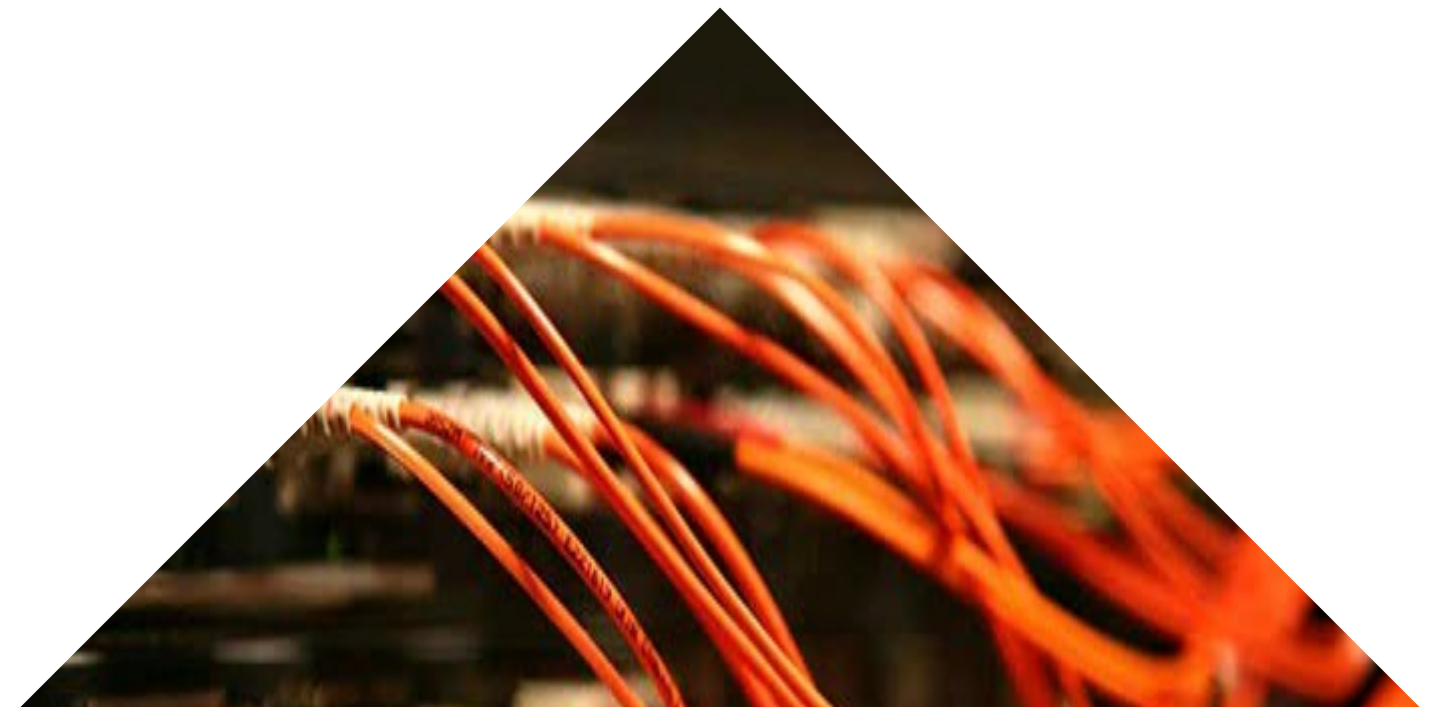
Introduction

Comercial Electro Industrial S.A. has been developing its activity since 1979, focused on the distribution of wiring and connection systems for various sectors such as energy, telecommunications, IT, industrial automation and industrial processes.

It is a preferred supplier of large companies and collaborates with its customers in looking for solutions and suitable products to satisfy their technical requirements, seeking to offer the best professional service with products from brands and manufacturers of recognised prestige and quality.

Since our activities began, we have sought to satisfy the needs of our customers with the products and manufacturers for which we are distributors, with this willingness having led us into the new markets that, throughout our existence, have been generated as a result of technological innovation, with a significant presence of our distributed products in broadband installations, FTTH, voice and data systems and industrial automation, paying attention at all times to the new needs of emerging markets and seeking to offer products of the highest quality to ensure the satisfaction of our customers.

The wide spectrum that covers the Fiber Optic market and the specialization that COMEL has as an integral supplier of solutions places us, helped by our experience and stock, as one of the main suppliers of this market, supporting and helping our customers at all times.



Cable de Fibra Óptica

The wide spectrum that covers the Fiber Optic market and the specialization that Comel has as an integral solution provider, places us, helped by our experience and stock, as one of the main suppliers of this market.

Multimode / Singlemode.

9/125 – 50/125 (OM2, OM3, OM4) – 62,5/125 (OM1).

Dielectric / Metallic protection.

Fiberglass / Corrugated Steel strip/ Kevlar (Aramid).

Exterior / Interior.

PE / LSZH. (With CPR)

Loose / Tight.



VP – VT (LSZH) Fibers

Fiber cable with fiberglass rodent protection, recommended for duct installations.

KP – KT (LSZH) Fibers

Fiber cable with kevlar reinforcement, recommended for aerial or facade installations.



PKP – TKT (LSZH) Fibers



Cable de fibra con doble cubierta y refuerzo de kevlar, recomendada para instalaciones aéreas y de fachada.

PESP-DR – TEST-DR (LSZH) Fibers

Double sheathed fiber cable with kevlar reinforcement, recommended for aerial and facade installations.



Riser Fibers

Indoor fiber cable with kevlar reinforcement, recommended for vertical distribution network between plants. CPR regulation.

FTTX Fibers

Microduct fiber cable with fiberglass reinforcement, recommended for aerial and facade installations.



DROP Cable

Fiber cable recommended for interconnection between equipment, boxes or rosettes. CPR standards. White or black color.

Fiber optic accessories



Junction Boxes

Universal access junction boxes, for indoor and outdoor use, for mounting in manholes, poles or walls. Easy to use, their versatile closure allows to operate with great comfort.

They are mechanically sealed with a rubber gasket. IP67/IP68
Different capacities with different number of cable entries.

Wall Boxes

Designed to be placed on the wall or at the bottom of the cabinet. They can house the fiber optic cable ends, protect the splices and make the connections.

They can be used as termination modules for the building network or as termination modules for the operator's network.



Outdoor Box

Fiber optic distribution boxes, used to join vertical distribution cables with single fiber drop cables.

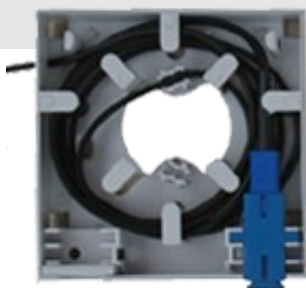
Suitable for cable bleeding, with tube housing.

Commonly used in FTTH applications with individual outlets for each subscriber.

Torpedo Bottle

Designed to give continuity to cables, either by giving continuity to all optical fibers of a cable or by branching a main cable into several secondary cables, suitable for cable bleeding.

They can be placed on poles, overhead, fixed to the wall and installed subway.



Rosette

They are installed inside buildings in surface mounting either as a termination point or as a transition point for service connections.

Accesorios de fibra óptica

Splitter

According to the manufacturing techniques, splitters used in fiber optics can be classified into two types:

- FBT (Fused Biconical Taper) splitter.
- PLC (Planar Lightwave Circuit) splitter.



Adapters

Simplex, Duplex, with or without flanges.

Multimode and singlemode.

UPC and APC polished.

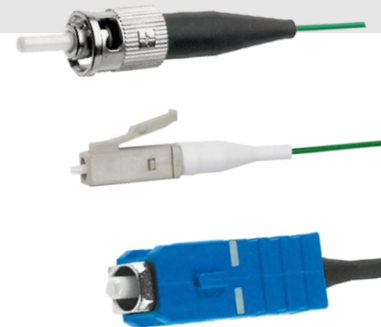
SC, LC, ST, FC, E2000, MU, MTRJ and high density with MPO - MTP connectors, in all polished types.

Pigtails

We have pigtails with LC, SC, ST, FC, MT-RJ, E2000 terminations.

Differentiated in two types of polishing: UPC and APC.

Standards: 1m, 1.5m, 2m or other lengths upon request.



Hoses

Available in multimode and singlemode. Models in simplex or duplex with the following connector types: ST, SC, LC, FC, E2000, MTRJ, MU and high density with MPO - MTP connectors, in all types of polish and length.

Fusion protector

40mm, 45mm, 60mm and 65mm.





Locations

Headquarters — Madrid, Spain

COMERCIAL ELECTRO-INDUSTRIAL, S.A.

Sierra de Guadarrama, 74 - P.I. San Fernando II

28830 – San Fernando de Henares

+34 91 6774757

centro@comel.org

www.comel.org

Northern Spain Office

euskadi@comel.org

Eastern Coast Office

levante@comel.org

Galicia and Portugal Office

galicia@comel.org

Catalonia Office

catalunya@comel.org

Andalucía and Extremadura Office

andalucia@comel.org



www.comel.org